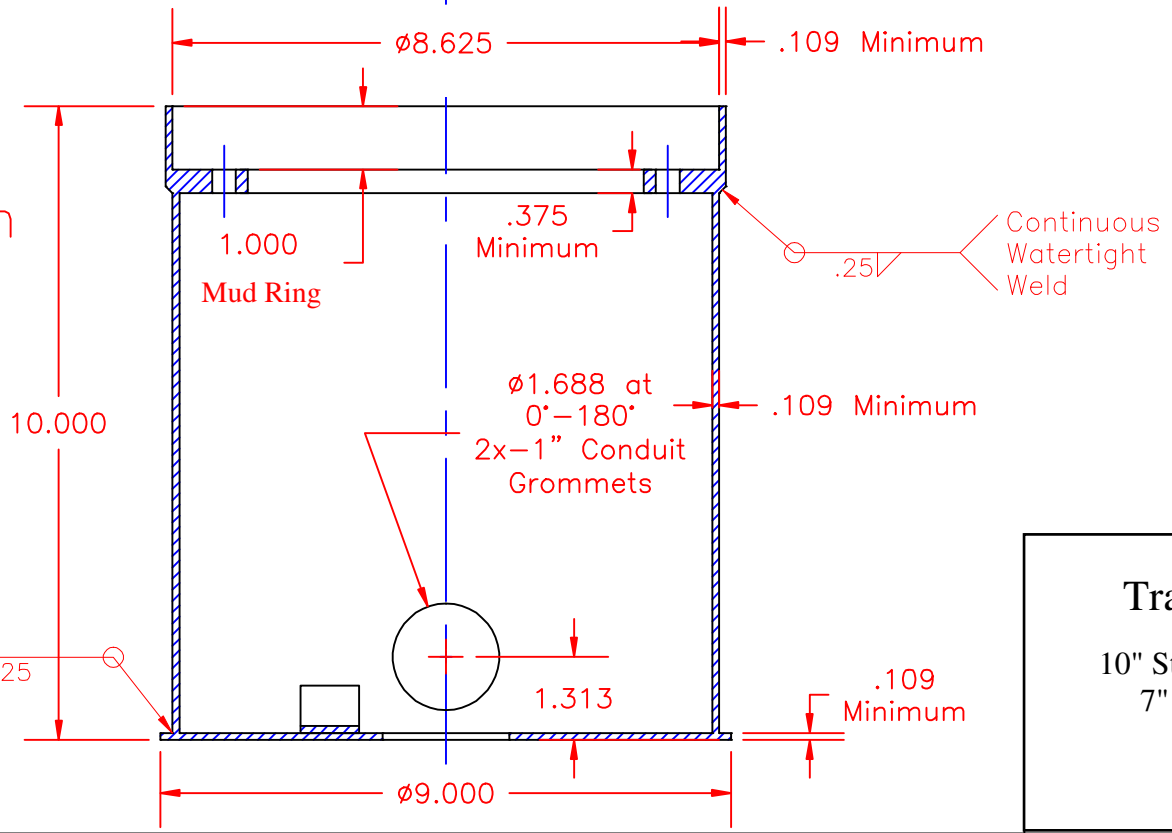


Note: This Base Can Compatible with the TS500 and TS520 Fixtures

Approval

Section AA



$x/x=.030$ $.xx=.010$ $.xxx=.005$ $.xxxx=.0005$
All dimensions in inches unless otherwise specified

Traffic Safety Corporation
 10" Steel Base Can with 1" Mud Ring,
 7" Bolt Circle and 2" Drain Hole
 BA-700-10-2
 BC-03 Rev. A, Released 063008