



Traffic Safety Corporation  
 2708 47th Ave.  
 Sacramento, CA 95822-3806  
 Toll Free: 888.446.9255  
 Tel: 916.394.9884  
 Fax: 916.394.2809  
 Email: sales@xwalk.com  
 Web: www.xwalk.com

## TS-SR-BALI-LF Flexible Bollard

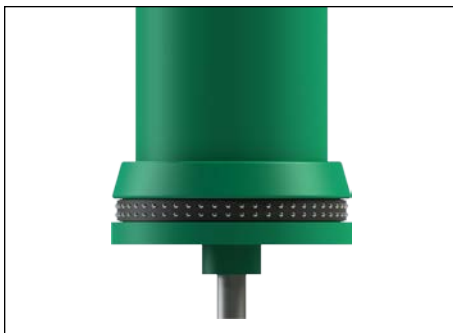
### Features

- Flexible bollard bounces back and returns to original position after impacts.
- Ideal for area delimitation and road delineation.
- Resistant to light and heavy vehicles.
- UV protection for greater durability.
- 3M reflective tape with high reflectivity for greater visibility at night.
- Reflective band with two rows of glass elements on base.
- Many color options for a wide variety of applications.
- Easy installation.



### Mechanical Features

- Main Body/Base Material: PU
- Fixation Screw: Galvanized Steel
- Anchor Material: Aluminum
- Main Body/Base Colors: Black, Grey (RAL 7040) and Green (other colors available by request)
- Reflective Tape: 3M Reflective Tape
- Reflective Tape Colors: White or Yellow
- Reflective Band with Glass Elements: Black with white crystals.



*Reflective band with two rows of glass elements.*



### Bollards

	TS-SR-BALI-LF
Height	31.5" (800mm)
Diameter on Top	5.12" (130mm)
Diameter on Base	6.38" (162mm)
Weight	7.39 lb. (3.350 Kg)

Other dimensions available by request.

### Anchors

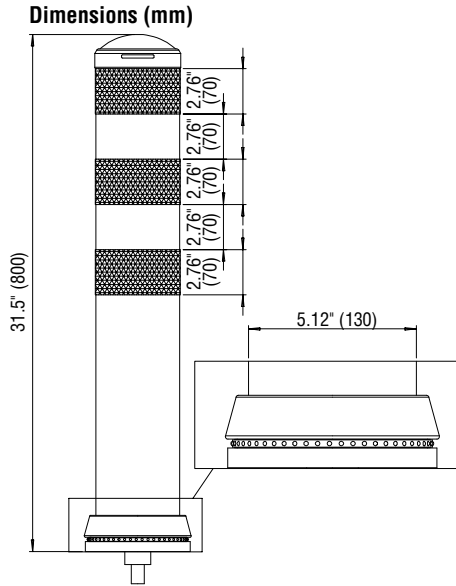
	TS-SR-A6050
Height	2.36" (60mm)
Diameter	1.97" (50mm)
Material	Aluminum
Weight	.37 lb. (0.166 Kg)

Visit our web site: [www.xwalk.com](http://www.xwalk.com)



Traffic Safety Corporation  
2708 47th Ave.  
Sacramento, CA 95822-3806  
Toll Free: 888.446.9255  
Tel: 916.394.9884  
Fax: 916.394.2809  
Email: sales@xwalk.com  
Web: www.xwalk.com

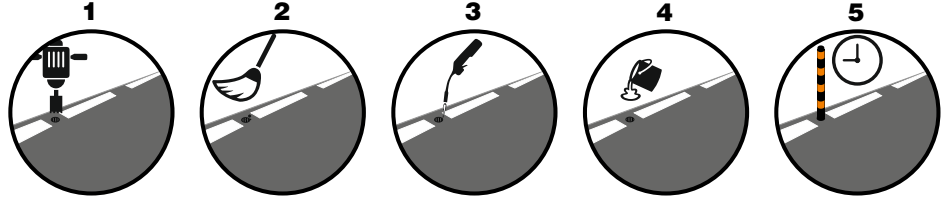
## TS-SR-BALI-LF Flexible Bollard



### Installation Procedure



Personal protective equipment must be worn during installation process.



- 1** Drill a hole with 2.36" (60mm) diameter and 2.76" (70mm) depth.
- 2** Brush any debris or dust from the hole resulting from drilling.
- 3** Dry the hole with a blowtorch to remove any moisture that may compromise the adhesion and effectiveness of the glue.
- 4** Pour glue in the hole and insert the TS-SR-BALI. Remove any excess remaining of glue. Recommended glues: PATTEX TQ 500, Hilti HIT-HY 150 or Sika AnchorFix®-1
- 5** The glue drying time may change depending on weather conditions. Consult the glue data sheet for more information.

**Changing or not completing the described installation process can result in suspension of warranty.**

Visit our web site: [www.xwalk.com](http://www.xwalk.com)