



Traffic Safety Corporation  
2708 47<sup>th</sup> Ave.  
Sacramento, CA 95822  
Phone (916) 394-9884  
Fax (916) 394-2809  
sales@xwalk.com  
www.xwalk.com

---

## SafePace® Data Collection Specifications Management and Programming

When using either software package, you will be able to set sign parameters, such as:

- Speed display range
- Digit and strobe flashing threshold speeds
- Detection range
- Operation mode

Settings can either be saved to files and given to other technicians, or used to program other SafePace® signs of similar model.

The SafePace® Pro software offers some additional advanced features that allow you to:

- Program radar sign schedules
- Adjust digit and strobe flashing frequencies
- View real-time readings (when connected to the sign)
- View sign location(s) via an integrated mapping tool
- Customize messages, graphics, and animations to correlate to driver behaviors, road conditions, and notable events (available only with variable messaging signs).

## Data Collection and Reporting

*“Traffic Statistics at Your Fingertips”*

Both software packages include an optional Data Collection feature offering extensive and highly precise traffic information. Utilizing the most accurate doppler radar technology available in the market today, traffic data is stored and collected for later analysis:

- Total and average vehicle counts
- Minimum and maximum speeds
- Average and 85th percentile speeds
- Total percentage of speed violations

Collected data can be retrieved and downloaded from the sign and viewed in hourly, daily, and weekly increments. Summary reports, weekly reports, and period comparison reports are but just a few of the reports and charts available. All reports can be printed directly or exported in a variety of formats to suit your needs. SafePace® Pro offers advanced statics and reporting which allows you to further customize reports and charts to view more granular traffic data.

## System Requirements

- Windows 7, 8, or 10
- 1024 x 600 display
- Bluetooth
- 25 MB disk space



**Traffic Safety Corporation**  
2708 47<sup>th</sup> Ave.  
Sacramento, CA 95822  
Phone (916) 394-9884  
Fax (916) 394-2809  
sales@xwalk.com  
www.xwalk.com

## SafePace Cloud

SafePace Cloud offers you the convenience to remotely manage your SafePace signs right from your computer. With detailed reporting, customized alerts, and real-time data, you can see stats for each sign, change settings, check batteries and download data without spending time traveling to sign locations. SafePace Cloud is an investment in the performance and success of your SafePace speed signs.

- View real time sign data.
- Access all sign stats from one location.
- Download detailed traffic data and reports.
- Set up customized alerts.
- Change settings and parameters.
- Cut down on workforce hours.
- Compatible with all SafePace signs.



## Features



### Cloud Based

Secure, remote access for simple to use sign management from anywhere with internet



### Real Time Data

See live performance data updated every five minutes



### User Friendly

Streamlined, easy-to-use interface



### Comprehensive Reporting

Use data to generate detailed reports you can use to better improve safety on your roads



### Mapping Tool

Map unlimited sign locations and create and apply parameters for each. Update sign location whenever a sign or trailer is moved.



### One Screen management

Manage alerts, messages, and display settings all from one screen



### One click scheduling

One click lets you schedule and program multiple signs simultaneously



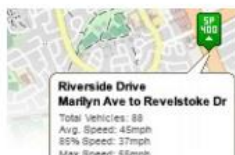
### Complete Control

Manage all aspects of sign configuration including schedules, messages, blinking limit, strobe limit, and display range



### Scheduling

Display settings can be constant or schedule based. Signs can be scheduled based on daily, weekly, and holiday schedules



### At a Glance Update

Statistics snapshot provides at-a-glance data updates including vehicle count, 85th percentile, and maximum and minimum speed



### Real time alerts

Receive email notification for alerts such as high or low speed or when batteries are low



### SafePace Compatible

Compatible for use with all SafePace radar speed signs